

# HIGH BAY LED FOR CRANE

## Anti-Vibration • Anti-Shock

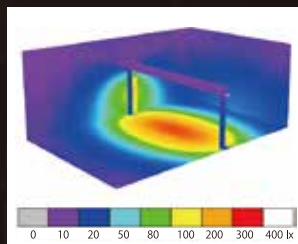


Indoor  
&  
Outdoor  
Lamp: IP65  
Driver: IP67

## Replacement HID 400W - 1000W

### HIGHBAY LED [Dome lens]

Reduce glare with anti-glare lens, illuminate a wide area

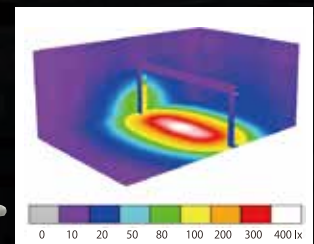


Crane size: W20m x H7.12m  
Product: CKU-700-50DK 3 sets

Type	Model	Watt	Lm	Lm/W	Beam angle
400	CKU-400-50DK	87W	12,580lm	144.6lm/W	115°
700	CKU-700-50DK	135W	19,280lm	142.8lm/W	115°
1000	CKU-1000-50DK	260W	36,426lm	140.1lm/W	115°

### HIGHBAY LED [Angle lens]

Reduce light waste by using angle lens



Crane size: W20m x H7.12m  
Product: CKU-700-50HT 3 sets

Type	Model	Watt	Lm	Lm/W	Beam angle
400	BKU-400-50HT	87W	13,180lm	151.5lm/W	80°
700	BKU-700-50HT	135W	21,236lm	157.3lm/W	80°
1000	BKU-1000-50ST	298W	45,730lm	153.4lm/W	50°

## Clear the strength test against Vibrations and Impacts

### Impact Resistance Test (JIS C 60068-2-27) Tests on equipment that impacted by mechanical transport (Dock crane, Forklift ect)

- A. Test conditions for repetitive impact: Working time: 6.0ms / Impact resistance 25G Total 1500 times (XYZ direction positive and negative each 250 times)
- B. Test conditions for non-repetitive impact: Working time: 11.0ms / Impact resistance 50G Total 18 times (XYZ direction positive and negative each 3 times)

### Vibration Resistance Test (JIS C 60068-2-6) Test on Parts, Equipment and Other electrical products subject to vibration or repetitive vibration during transportation, use

- A. Test conditions for repetitive vibration: Frequency range: 10Hz - 150Hz Acceleration: 20m/s<sup>2</sup> Number of sweep cycles for each axis direction: 20